

# VensaMatrix Multi-Enzymes



www.thxspring.com | thx@thxspring.com

1

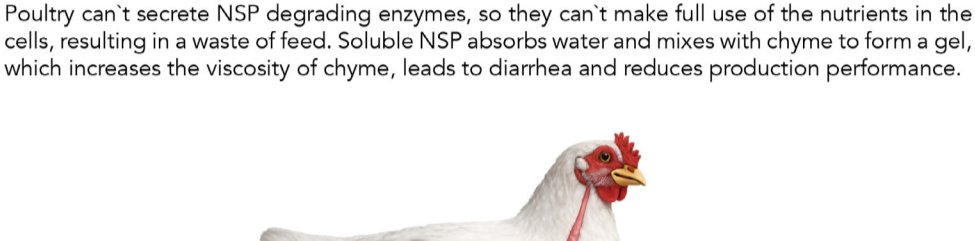
## VensaMatrix

### The Difficulties We Encountered

#### Antinutritional effects of NSP

Non-Starch Polysaccharides (NSP) are the main component of the cell wall, which is rich in feed ingredients and has a Cage effect, resulting in difficult release of nutrients in the cell.

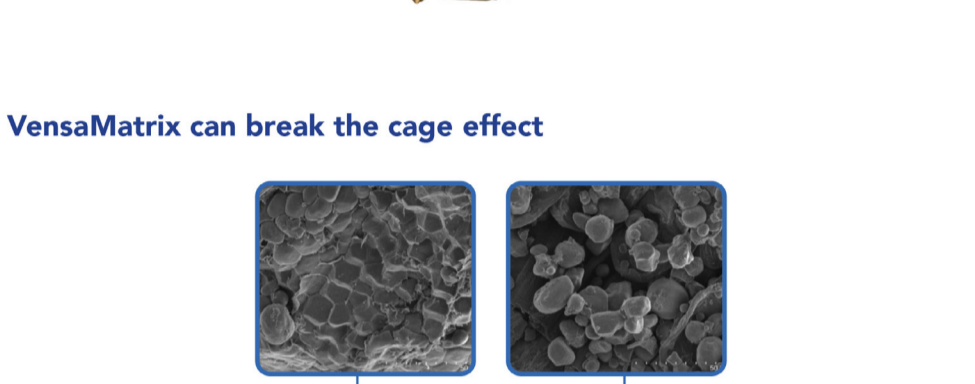
#### Anti-nutritional Factors Analysis of Conventional Feed Materials (%)



### The Importance of Exogenous VensaMatrix

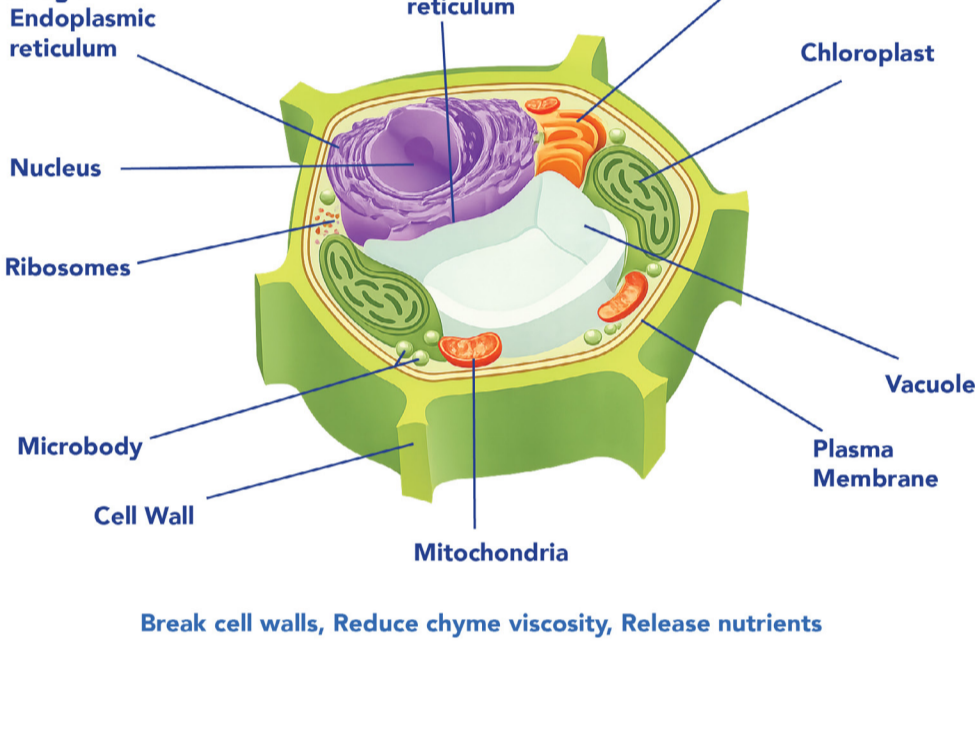
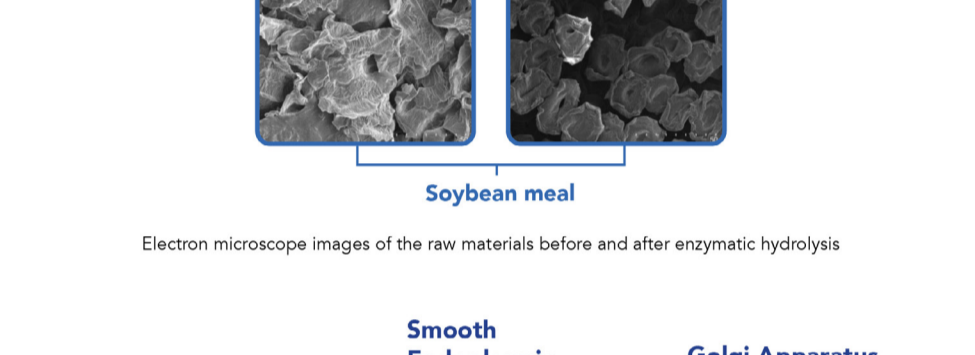
#### Lack of NSP degrading enzyme

Poultry can't secrete NSP degrading enzymes, so they can't make full use of the nutrients in the cells, resulting in a waste of feed. Soluble NSP absorbs water and mixes with chyme to form a gel, which increases the viscosity of chyme, leads to diarrhea and reduces production performance.



2

### VensaMatrix can break the cage effect



3

### VensaMatrix can break the cross-links between lignin, cellulose and hemicellulose, and degrade water-insoluble cellulose and hemicellulose.

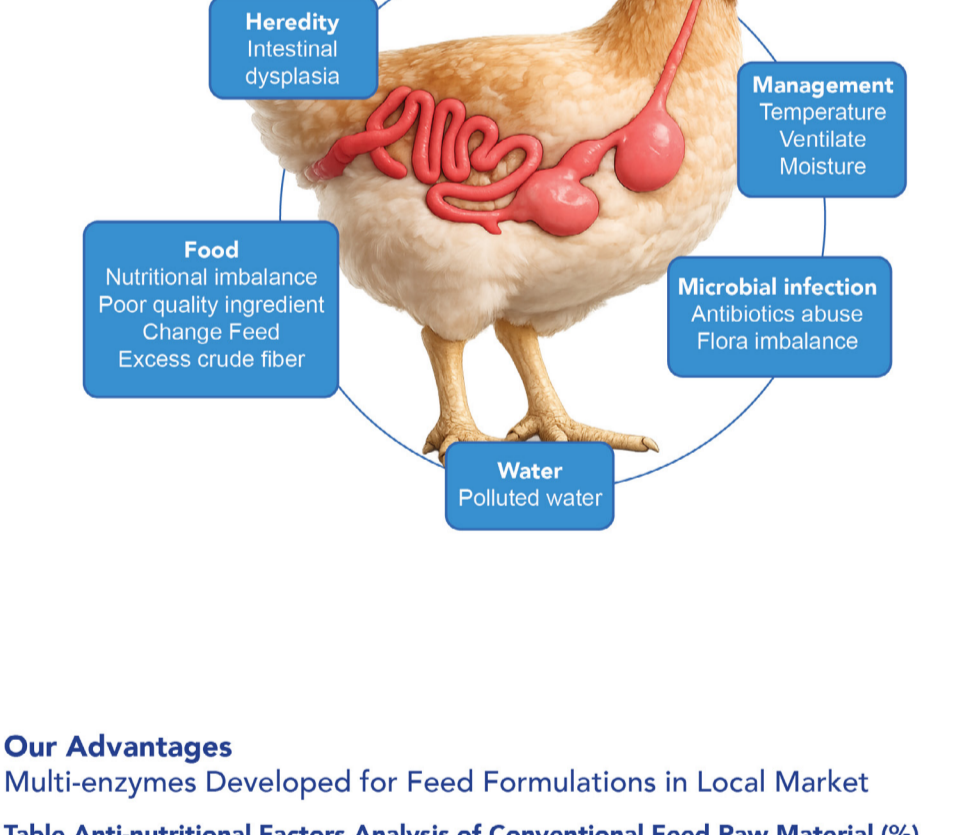
- Efficiently degrade the components of plant cell walls, promoting the release of nutrients;
- Efficiently decompose water-soluble non-starch polysaccharides, reducing the viscosity of feed, and improving the digestibility and utilization rate of feed;
- Increase the utilization rate of cellulose and hemicellulose, increase energy value, and enhance intestinal health.

### The Solution We Have

VensaMatrix is a Multi enzyme product developed according to the feed formula and raw material of local market, through reasonable analysis and collocation

#### Each kg of VensaMatrix Provides:

Xylanase	10,000U	Cellulase	2,000U
β-Glucanase	2,000U	β-Mannanase	2,000U
Cellulase	2,000U	Pectinase	500U



4

### Our Advantages

Multi-enzymes Developed for Feed Formulations in Local Market

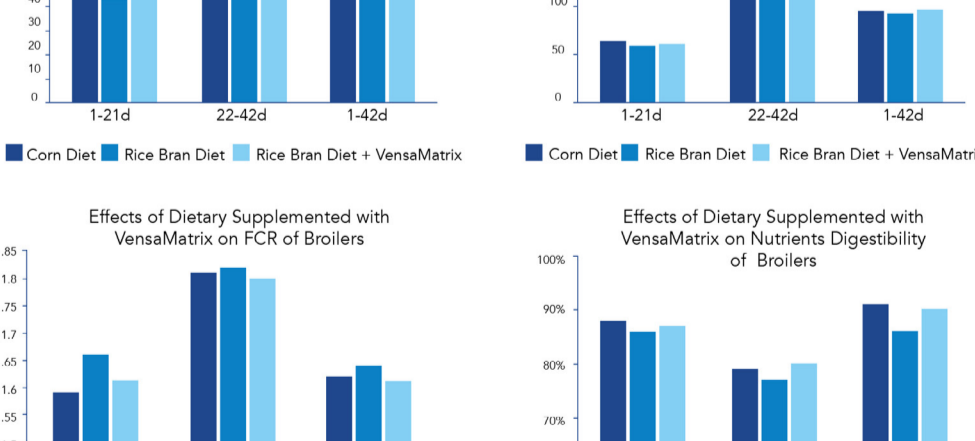
#### Table Anti-nutritional Factors Analysis of Conventional Feed Raw Material (%)

Feed Raw Material	Xylan	β-Mannan	β-Glucan	Cellulose
Corn	4.40	0.60	0.10	1.70
Full Fat Soybean	3.60	0.60	1.30	5.80
Rice Polish	1.30	0.40	0.30	2.00
Rice Bran	10.00	1.90	13.10	3.60
DDGS	14.70	0.30	0.30	3.50
Soybean Meal	6.00	2.00	1.40	5.00
Poultry Meal	2.86	0.40	0.15	2.20
Cottonseed Meal	7.80	1.40	0.20	9.30

Note: The same feed ingredients may vary from region to region.

### Application of VensaMatrix

Improve the growth performance and nutrient digestibility



5

### SPECIFICATION & COSTOMIZATION

Name	VensaMatrix
Type	Granule
Costomisation	Customized Service
<b>COMPOSITION</b>	
Xylanase	10,000U
β-Glucanase	2,000U
Cellulase	2,000U
β-Mannanase	2,000U
Pectinase	500U
Usage	100-500g/T in complete feed
<b>PACKAGE &amp; STORAGE</b>	
<b>Package:</b>	25 kg/bag
<b>Shelf life:</b>	12 months
<b>Storage:</b>	Below 25°C, Avoid direct sunlight, rain, high temperature & humidity

